



Ageing and Affordability in Primary Care – the gaps

PART 1: Panel:

- Mental Health:

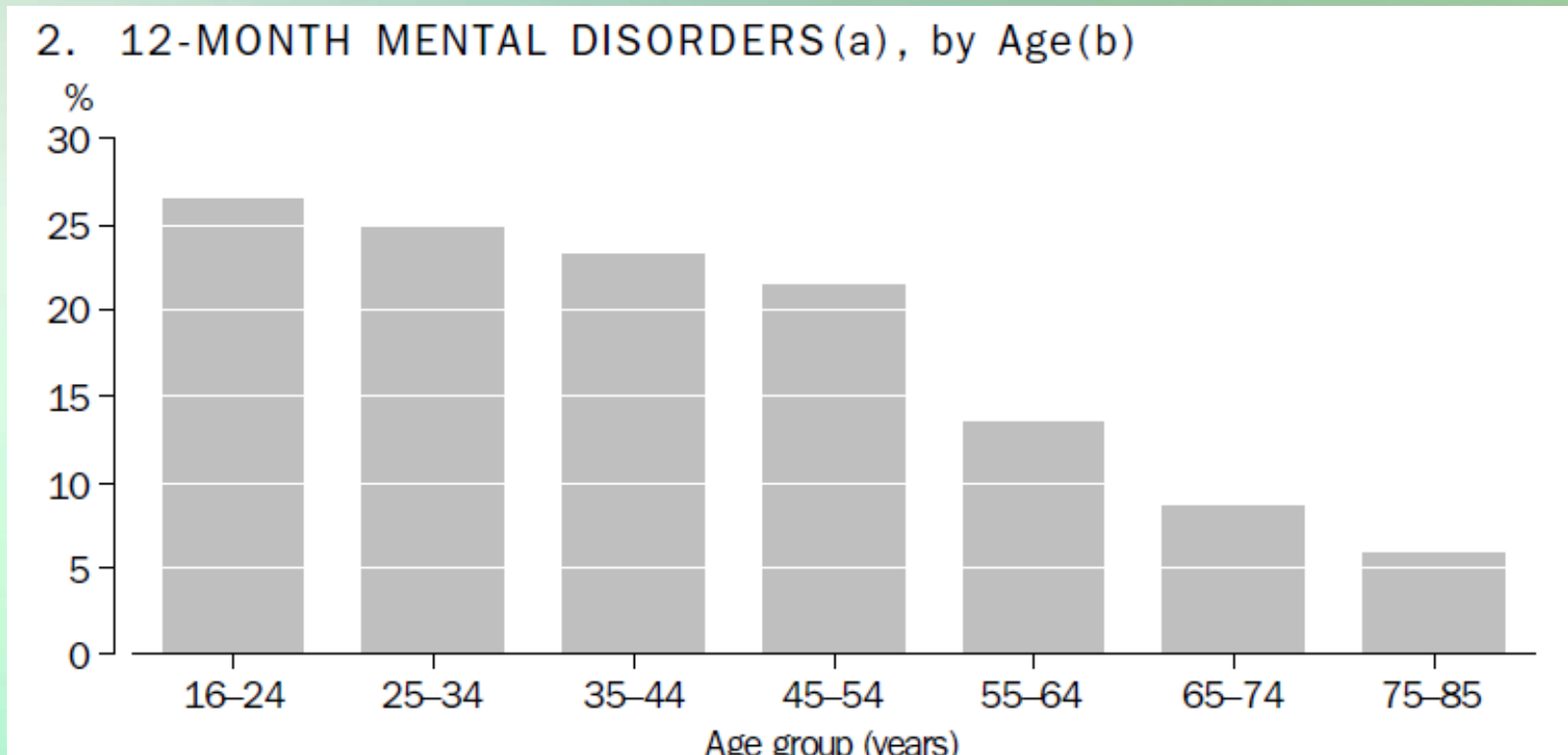
Dr Roderick McKay, NSW Institute of Psychiatry

MENTAL HEALTH OF OLDER PEOPLE: WHICH FACTS DO WE SEE?

Dr Roderick McKay
Director Psychiatry & Mental Health
NSW Institute of Psychiatry



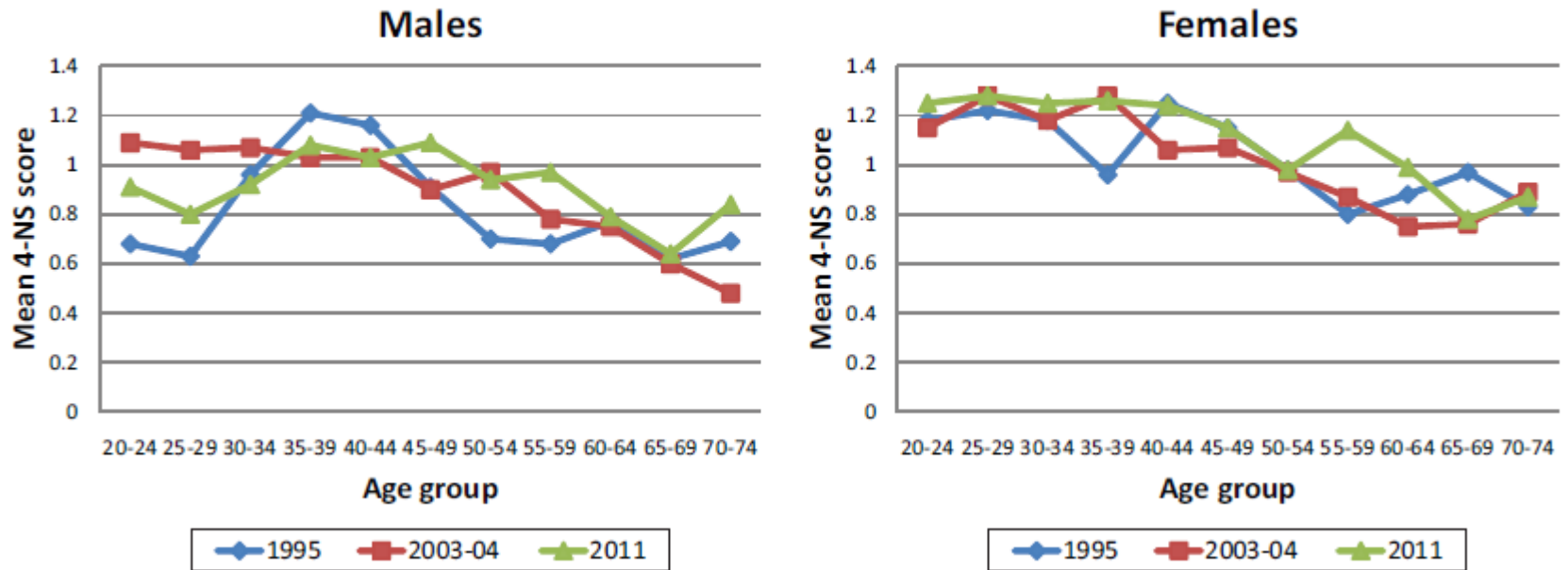
Mental Health Disorder



ABS • NATIONAL SURVEY OF MENTAL HEALTH AND WELLBEING : SUMMARY OF RESULTS • 4326.0 • 2007

Psychological distress

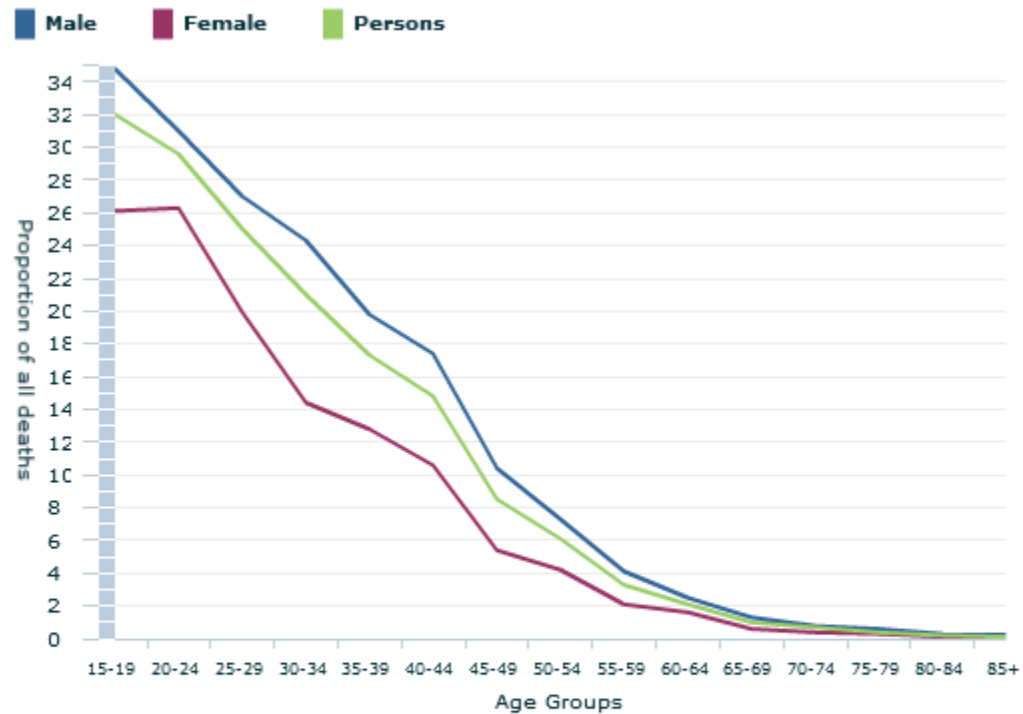
Figure 1. Mean 4-NS score by gender and age group for three survey time points



Jorm AF, Reavley NJ. Changes in psychological distress in Australian adults between 1995 and 2011. Australian and New Zealand Journal of Psychiatry. 2012 Apr 1;46(4):352-6.

The facts: suicide

PROPORTION OF SUICIDES(a) BY SELECTED AGE GROUPS, 2013(b)



Save Chart Image

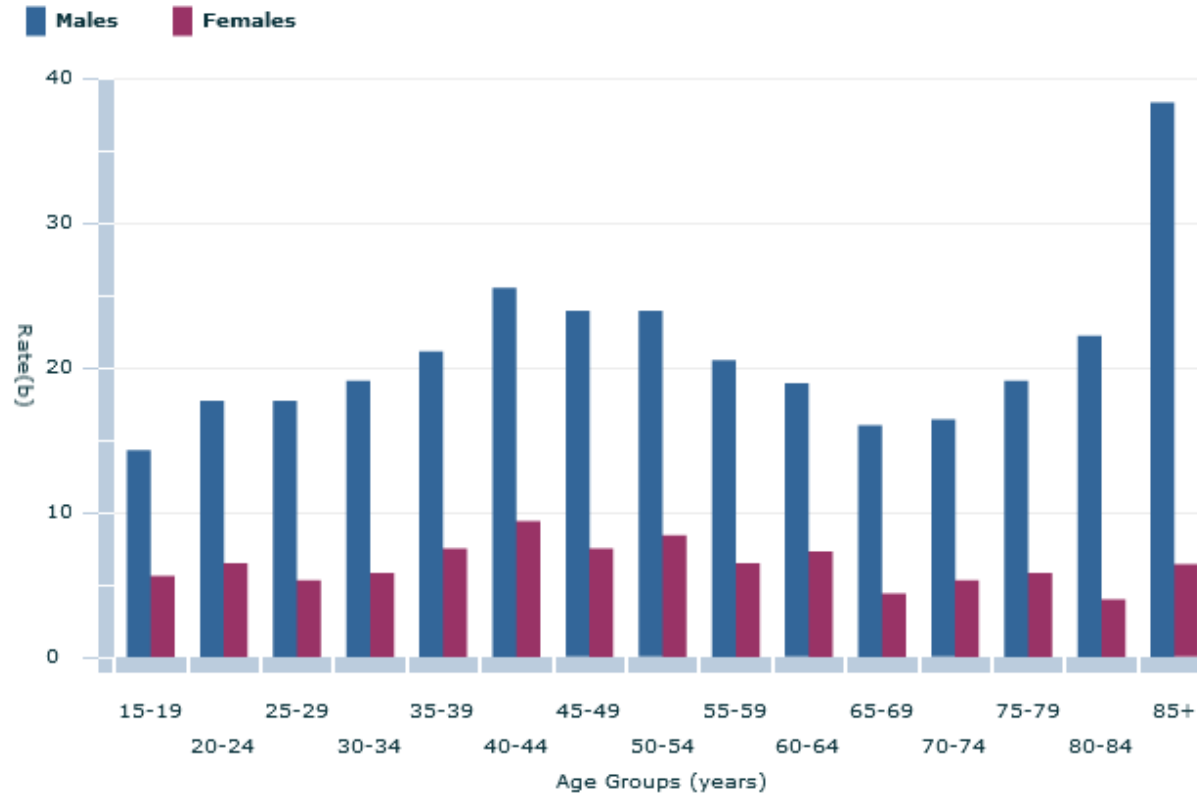
Australian Bureau of Statistics

© Commonwealth of Australia 2015.



The facts: suicide

AGE-SPECIFIC SUICIDE(a) RATES(b), 2013(c)



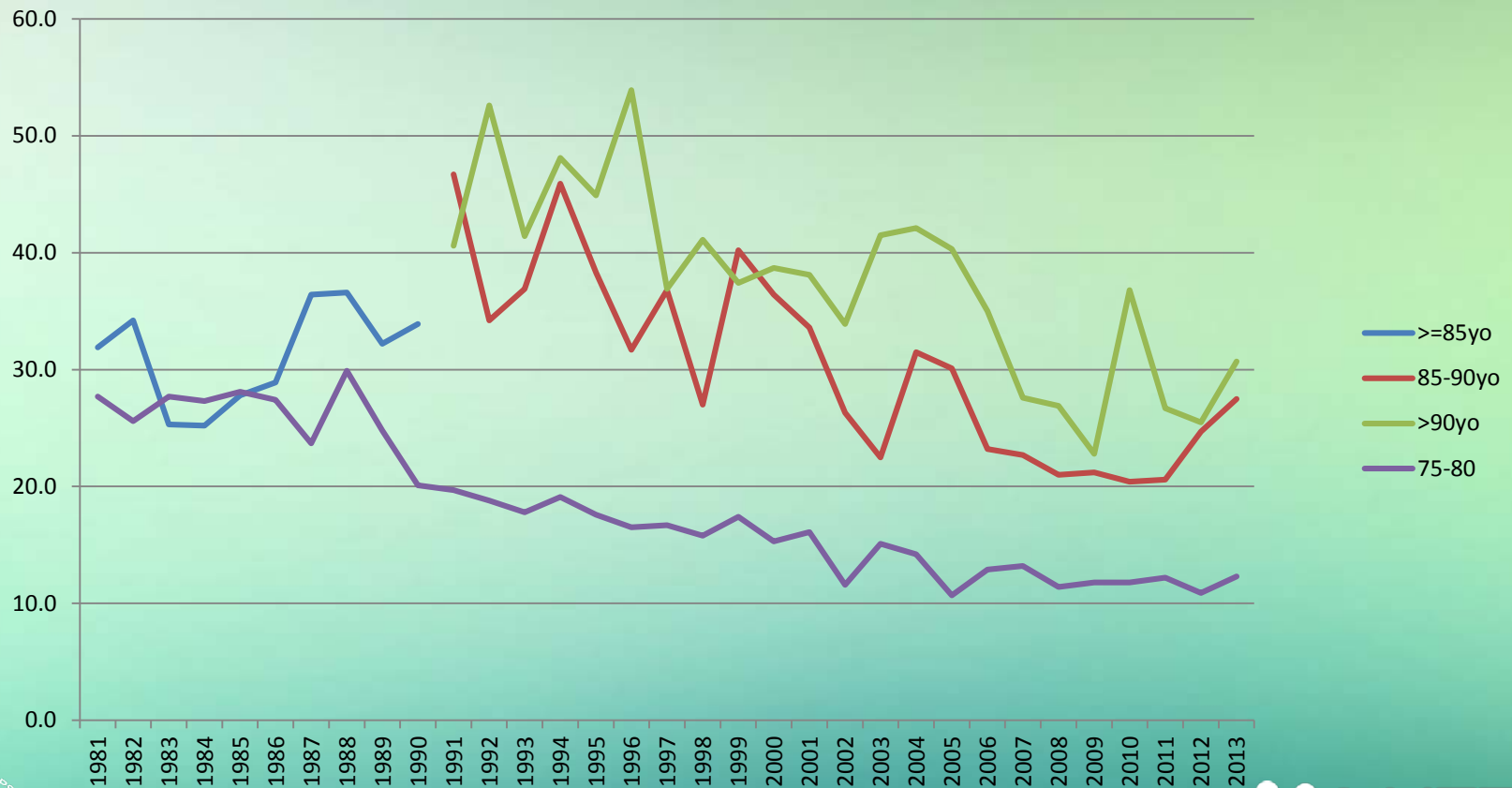
Save Chart Image

Australian Bureau of Statistics

© Commonwealth of Australia 2015.

Not inevitable: Male Suicide deaths in the UK

(rate per 100,000 population in age group)

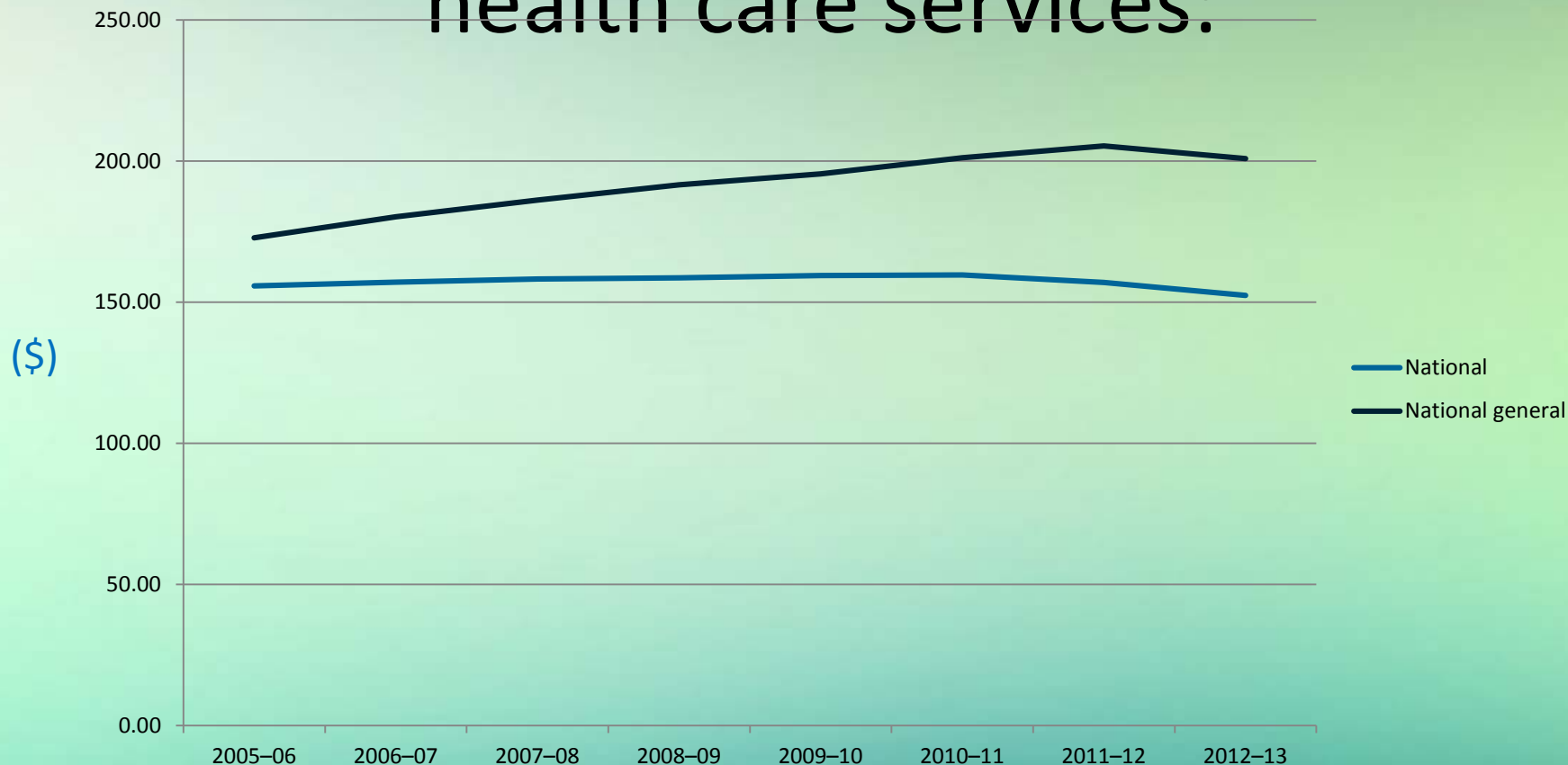


Data from Office for National Statistics (2015) Suicide in the United Kingdom, 2013 Registrations

The response



Recurrent expenditure per capita on specialised older persons mental health care services:



Data from AIHW: Mental health services in Australia

Expenditure on mental health services

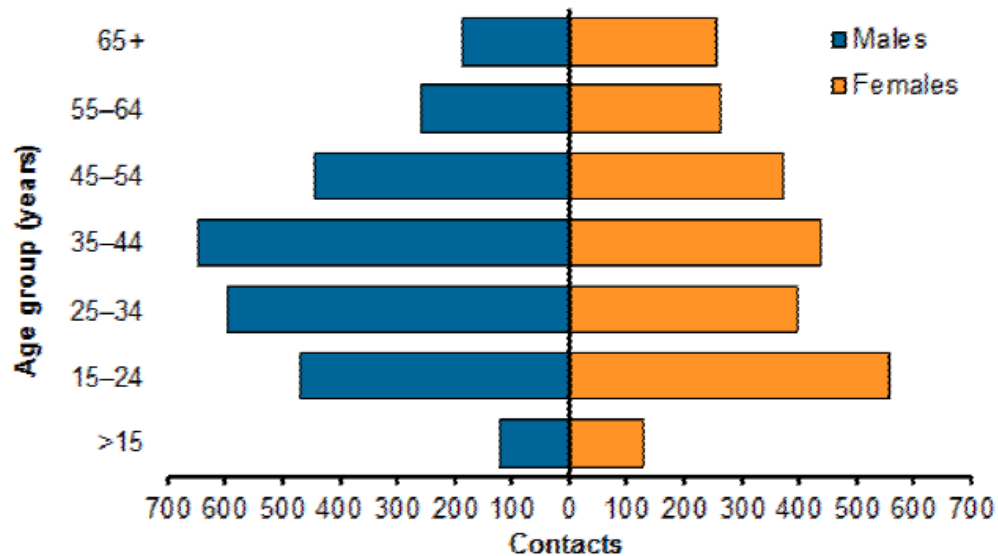
Table EXP.12: Recurrent expenditure(a) (\$) per capita(b) on specialised mental health care services, constant prices(c), by target population, states and territories, 2005-06 to 2012-13



State community MH services

Figure CMHC.3 Community mental health care service contacts, by age group and sex, 2013-14

Rate (per 1,000 population)



Notes:

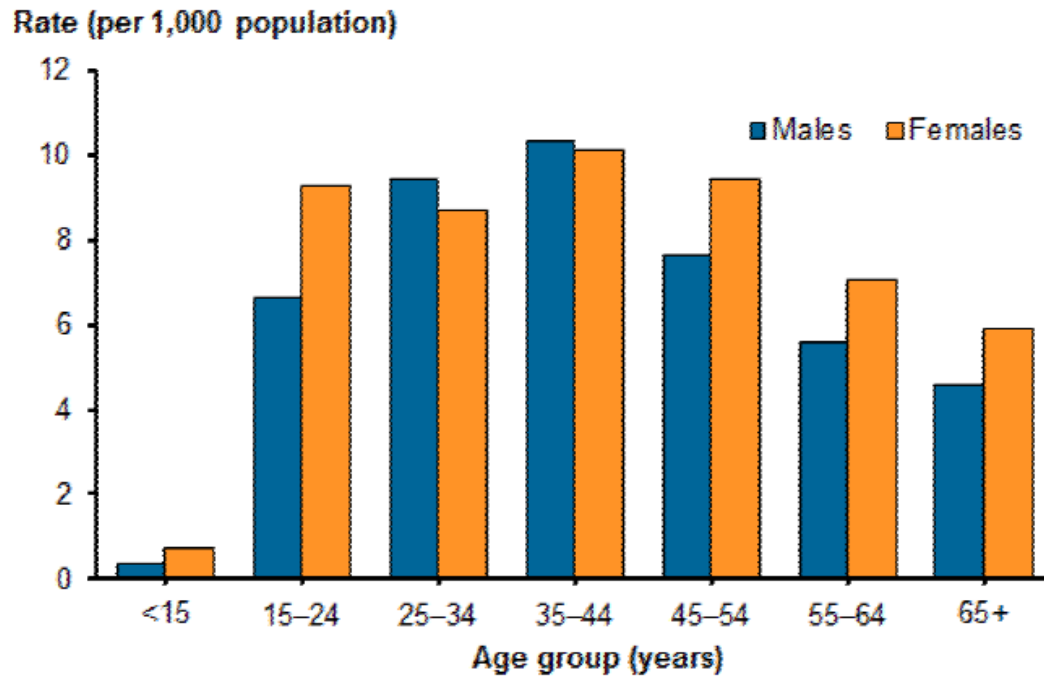
1. Crude rates are based on the estimated Australian resident population on 31 December 2013.

Source: National Community Mental Health Care Database.

Source data Community Mental Health Care Table CMHC.15 (1,529KB XLS).

State inpatient care

Figure AD.3: Admitted patient separation with specialised psychiatric care rates, by sex and age, 2013–14

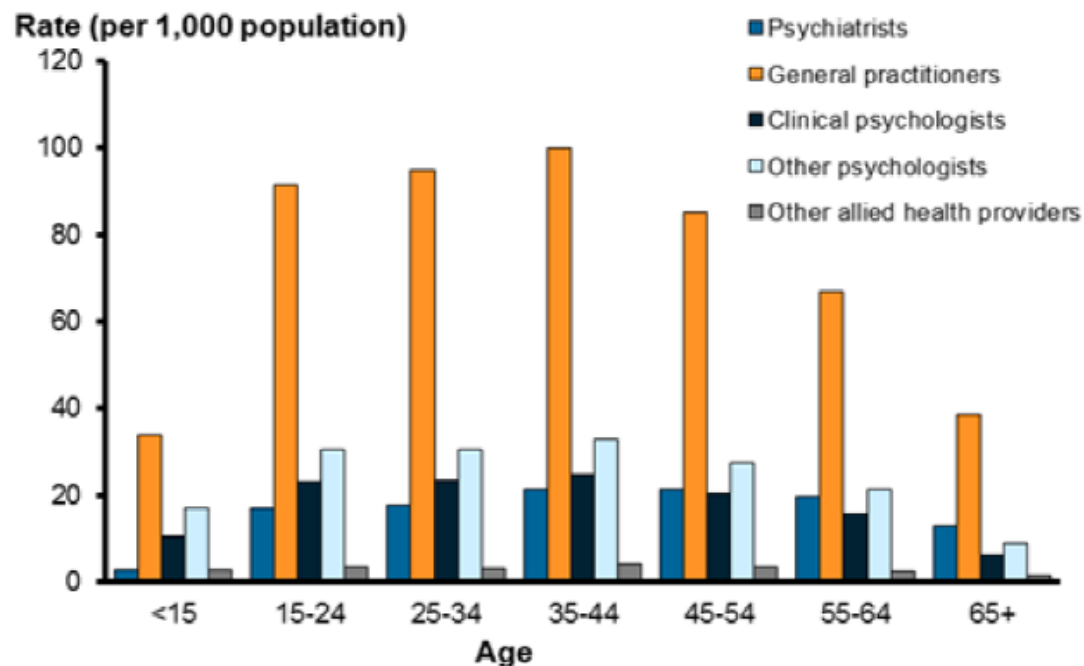


Note: Separations with a care type of *Newborn* (without qualified days), and records for *Hospital boarders* and *Posthumous organ procurement* have been excluded.

Source: National Hospital Morbidity Database. Source data Admitted patient mental health-related care Table AD.2 (1.24MB XLS).

Medicare funded MH services

Figure MBS.4: People receiving Medicare-subsidised mental health-related services by provider type and age group, 2014–15

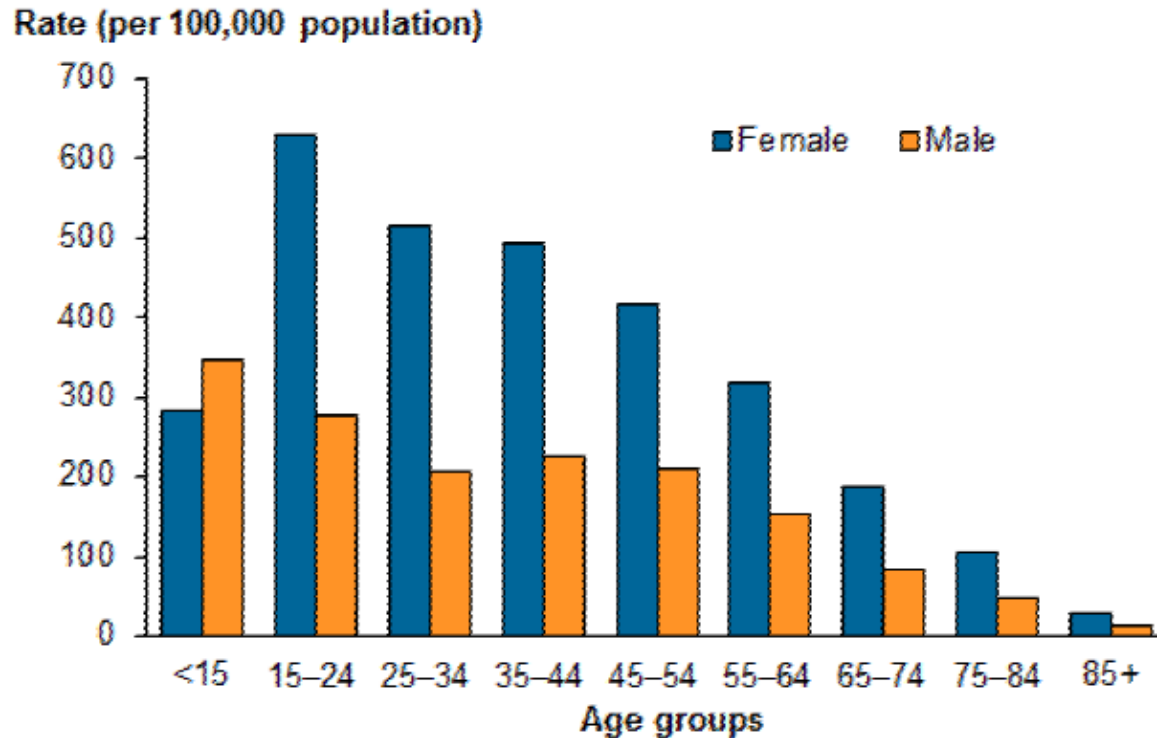


Source: Medicare Benefits Schedule data (Department of Health).

Source data Medicare-subsidised mental health-related services Table MBS.2 (453 KB XLS).

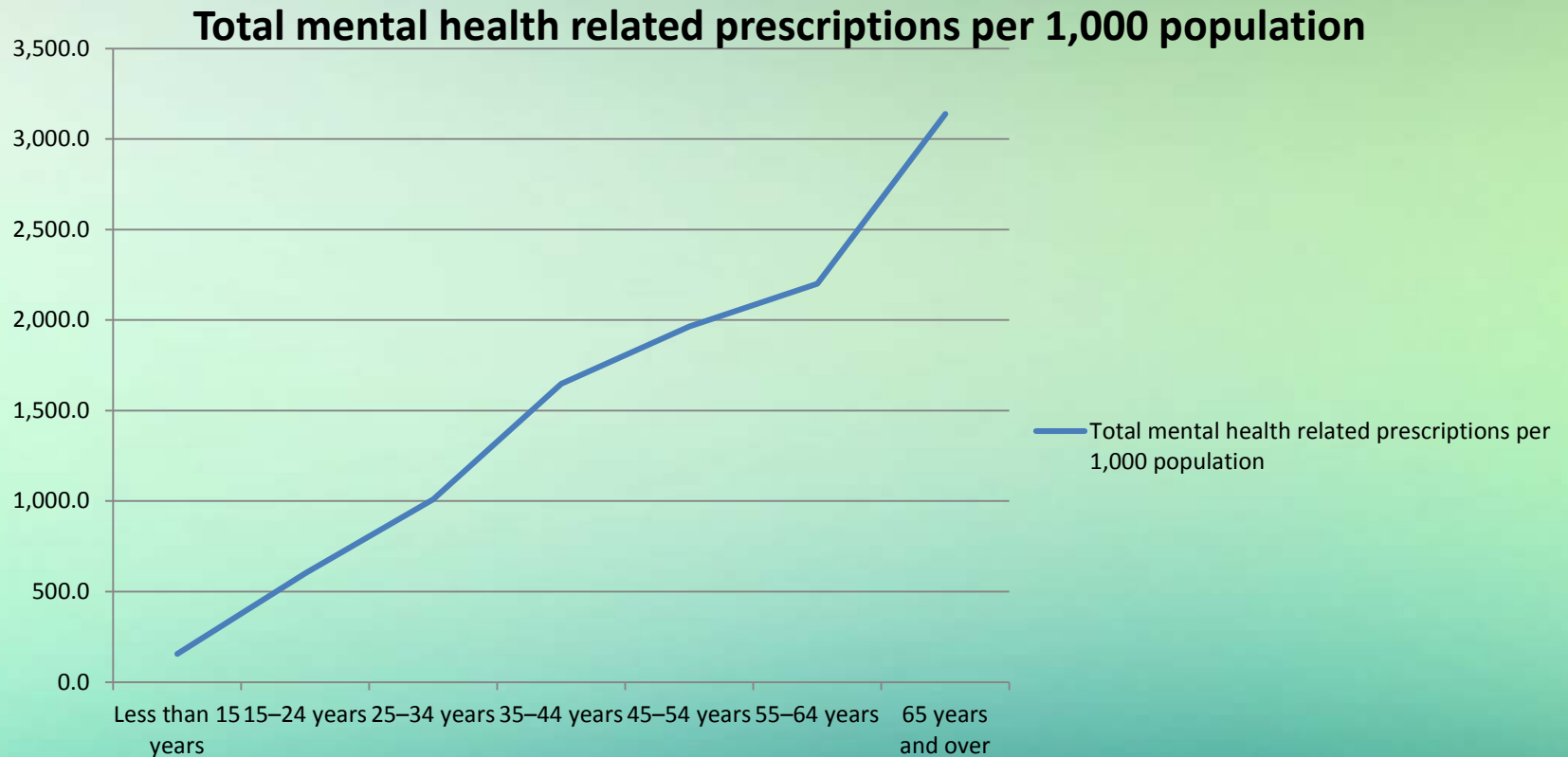
ATAPS psychologist services

Figure ATAPS.2: ATAPS consumers, age group and sex, 2013–14



Source: Access to Allied Psychological Services Minimum Dataset 2013–14. Source data Access to Allied Psychological Services Table ATAPS.1

Mental Health related prescriptions



A Final word: celebrate that most Australians do have to a long and *satisfying* life ...come what may



Clive James 21st August 2015

www.independent.co.uk

“I'm now in what my friend Bruce Beresford calls the departure lounge and the flight out is delayed. That's really what's happening. It's brighter and sharpened up because you see, even when your sight is theoretically going dim, you see things much more clearly and you see the past more clearly, as you know, from being ill. You start looking back to when you were well, to that childhood and it's boundless energies.

Well I think about that all the time and thinking about life, it gives me life.”

<http://www.abc.net.au/pm/content/2015/s4297903.htm>

